



MECH FLOW SUPPLIES



Malleable Iron Pipe Fittings



Ductile Iron Grooved Fittings and Couplings



Valves



Cast Bronze Fittings



Electrical Power Fittings



Malleable Iron Pipe Clamps



Ductile Iron Pipe Fittings
Cast Iron Pipe Fittings



Pipe Nipples



JINAN MEIDE CASTING CO., LTD.

Address: Meide Science & Technology Park,
Industrial Park Pingyin, Jinan, China 250400

Phone: (86)531 87879384 87885036 87885067

Fax: (86)531 87879387

Email: info@meide-casting.com

Http://www.meide-casting.com



UPDATED 07/2019

MECH Brand Malleable Iron Pipe Fittings

To Provide **Safe & Reliable** Products and **Smart & Complete** Solutions for Clients in Fluid Conveying Industry Across the Globe.



More than 50 years of Foundry Experience

Company Profile

Meide Group is a high-tech enterprise specialized in supplying fittings and valves in fluid industry. The company has won more than 400 great honors, such as Single Champion Demonstration Enterprise, Green Manufacturing Enterprise, China's top 100 Light Industrial Enterprise, China's Leading Enterprise of Malleable Iron Pipe Fitting Production Base, National Enterprise with Good Creditworthiness and China's Famous Brand.

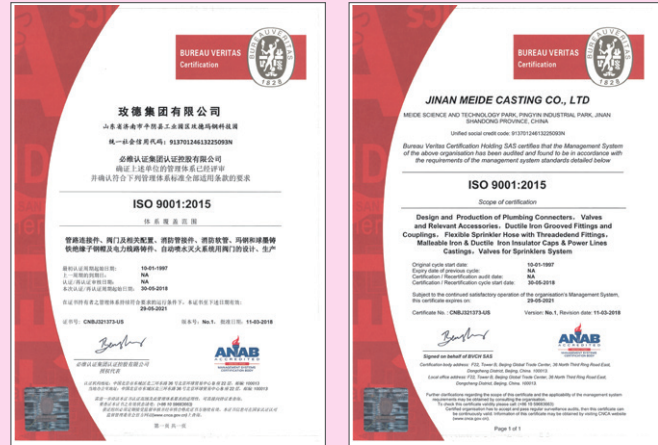
Inheriting the originality, and striving for excellence. "MECH" brand products are widely used in Burj Khalifa, Dubai, new WTC in New York, Shanghai Tower, UHV transmission lines and other landmark buildings and projects such as Beijing-Shanghai high-speed railway. Adhering to the customer-centered product development and innovation concept, to meet and guide the growing needs of users, to provide safe & reliable products and smart & complete solutions for clients in fluid industry across the globe, Meide Group has become the industry leader.

Using development innovation platform such as National Enterprise Technical Center and Post-Doctoral Research Center, Meide Group is

promoting the transformation of technology innovation achievements into productive forces, has completed the transformation of production process from mechanization to automation and intelligence, management from experience to institutionalization and process, marketing is from selling products to offering solutions, steadily improve Meide Group's role in the global value chain.

Through the construction of three production bases, including Jinan, Linyi and Bangkok, Meide Group has formed a cross-regional, multi-base international development pattern. Meide Group never forgets the original intention, operates in compliance, keeps growing, insists on sharing development results with customers, employees, shareholders and the community, and strive to be a happy and respectable company.

Certificates



MECH Brand Malleable Iron Pipe Fittings

Material: BS EN 1562, ASTM A-197, ASTM A47

Threads: ISO7-1, ASME B1.20.1

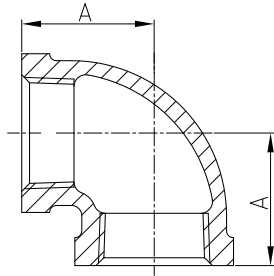
Size Available: 1/2" - 2 1/2"

Surface Treatment: Hot-dipped Galvanizing, Black



90

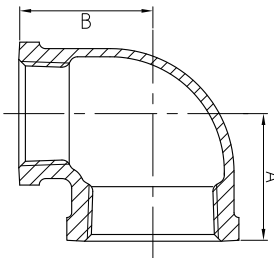
Elbow, 90°



Size	Inch	1/2	3/4	1	1 1/4
	mm	15	20	25	32
Dim. (mm)	A	25	30	36.5	41
Size	Inch	1 1/2	2	2 1/2	
	mm	40	50	65	
Dim. (mm)	A	44	53	64.5	

90R

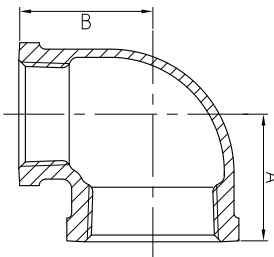
Reducing Elbow, 90°



Size	Inch	3/4X1/2	1X1/2	1X3/4	1 1/4X1/2
	mm	20X15	25X15	25X20	32X15
Dim. (mm)	A	27.5	30.5	33.5	33
	B	28.5	31.5	34	37
Size	Inch	1 1/4X3/4	1 1/4X1	1 1/2X1/2	1 1/2X3/4
	mm	32X20	32X25	40X15	40X20
Dim. (mm)	A	35	38.5	32.5	36
	B	38.5	41	39	42.5

90R

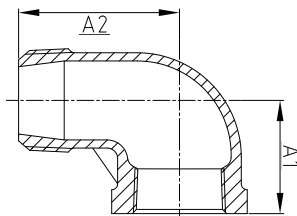
Reducing Elbow, 90°



Size	Inch	1 1/2X1	2X3/4	2X1	2X1 1/2
	mm	40X25	50X20	50X25	50X40
Dim. (mm)	A	38.5	36.5	40.5	47
	B	44	47	48	52
Size	Inch	2 1/2X1			
	mm	65X25			
Dim. (mm)	A	43.5			
	B	56			

92

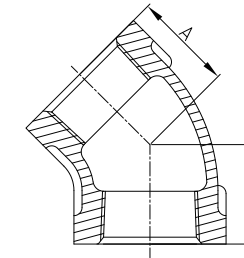
Street Elbow, 90°



Size	Inch	1/2	3/4	1	2
	mm	15	20	25	50
Dim. (mm)	A1	25	30	36.5	53
	A2	34.5	40	50	73.5
Size	Inch				
	mm				
Dim. (mm)	A1				
	A2				

120

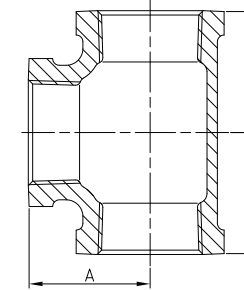
Elbow, 45°



Size	Inch	3/4	1	1 1/4	1 1/2
	mm	20	25	32	40
Dim. (mm)	A	23.5	25.5	31	35.5
Size	Inch	2	2 1/2		
	mm	50	65		
Dim. (mm)	A	38	44		

130

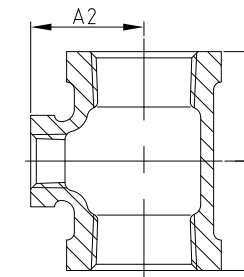
Tee



Size	Inch	1/2	3/4	1	1 1/4
	mm	15	20	25	32
Dim. (mm)	A	25	30	36.5	41
Size	Inch	1 1/2	2	2 1/2	
	mm	40	50	65	
Dim. (mm)	A	44	53	64.5	

130R

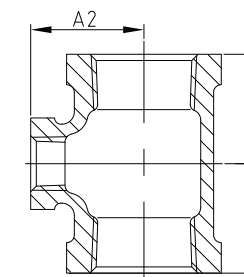
Reducing Tee



Size	Inch	3/4X1/2	1X1/2	1X3/4	1 1/4X1/2	1 1/4X3/4	1 1/4X1
	mm	20X15	25X15	25X20	32X15	32X20	32X25
Dim. (mm)	A1	27.5	28.5	33.5	30	35	39
	A2	28	31	34	36	38.5	41.5
Size	Inch	1 1/2X1/2	1 1/2X3/4	1 1/2X1	1 1/2X1 1/4	2X1/2	2X3/4
	mm	40X15	40X20	40X25	40X32	50X15	50X20
Dim. (mm)	A1	30.5	33	39	42.5	34.5	34.5
	A2	39.5	41	44.5	46	46	47.5

130R

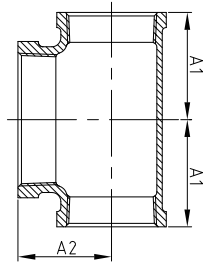
Reducing Tee



Size	Inch	2X1	2X1 1/4	2X1 1/2	2 1/2X1 1/2	2 1/2X3/4	2 1/2X1
	mm	50X25	50X32	50X40	65X15	65X20	65X25
Dim. (mm)	A1	40	44.5	47.5	38.5	39	44.5
	A2	48	50.5	52	54.5	55.5	56.5
Size	Inch	2 1/2X1 1/4	2 1/2X1 1/2	2 1/2X2			
	mm	65X32	65X40	65X50			
Dim. (mm)	A1	44.5	50.5	56.5			
	A2	60.5	60.5	61.5			

130R

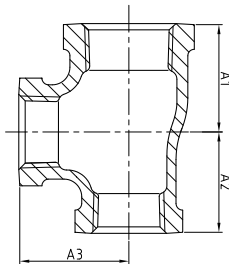
Reducing Tee



Size	Inch	3/4X3/4X1	1X1X1 1/4	1 1/4X1 1/4X1 1/2	1 1/4X1 1/4X2
	mm	20X20X25	25X25X32	32X32X40	32X32X50
Dim. (mm)	A1	33	39.5	46.5	52.5
	A2	33.5	38	40.5	43.5
Size	Inch	1 1/2X1 1/2X2	2X2X2 1/2		
	mm	40X40X50	50X50X65		
Dim. (mm)	A1	51	61.5		
	A2	47.5	56.5		

130R

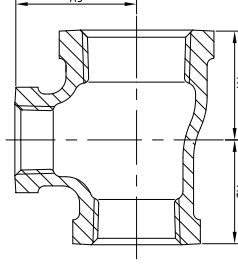
Reducing Tee



Size	Inch	1 1/4X1X1	1 1/2X1X1	1 1/2X1 1/4X1 1/4
	mm	32X25X25	40X25X25	40X32X32
Dim. (mm)	A1	39	38.5	43.5
	A2	37	36.5	43.5
	A3	41.5	44	46.5
Size	Inch	2X1 1/2X1 1/2		
	mm	50X40X40		
Dim. (mm)	A1	47		
	A2	46		
	A3	52.5		

130R

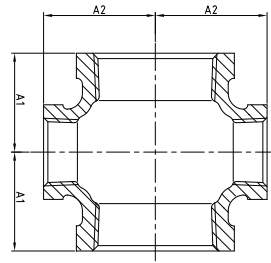
Reducing Tee



Size	Inch	1 1/2X1 1/4X1 1/2	1 1/2X1 1/4X1	2X1 1/2X1
	mm	40X32X15	40X32X25	50X40X25
Dim. (mm)	A1	32.5	38	40.5
	A2	32.5	37.5	39.5
	A3	39	44	50.5
Size	Inch	2X1 1/2X1 1/4	2 1/2X2X1	2 1/2X2X1 1/4
	mm	50X40X32	65X50X25	65X50X32
Dim. (mm)	A1	44.5	44	47
	A2	43.5	40.5	44
	A3	52	57	59

180R

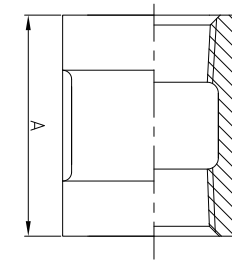
Reducing Cross



Size	Inch	1 1/4X1	1 1/2X1	2X1	2X1 1/4
	mm	32X25	40X25	50X25	50X32
Dim. (mm)	A1	38.5	39.5	40.5	44.5
	A2	41.5	43.5	48.5	50.5
Size	Inch	2 1/2X1	2 1/2X1 1/4		
	mm	65X25	65X32		
Dim. (mm)	A1	43	47.5		
	A2	56.5	57.5		

220

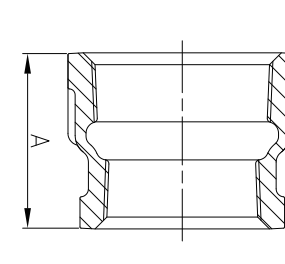
Socket



Size	Inch	1/2	3/4	1	1 1/4
	mm	15	20	25	32
Dim. (mm)	A	30	33	40	43
Size	Inch	1 1/2	2	2 1/2	
	mm	40	50	65	
Dim. (mm)	A	45	55.5	66	

240

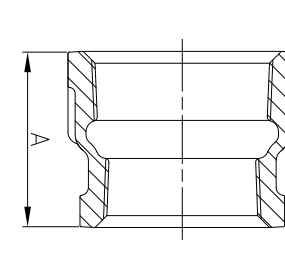
Reducing Socket



Size	Inch	3/4X1/2	1X1/2	1X3/4	1 1/4X1	1 1/4X3/4
	mm	20X15	25X15	25X20	32X15	32X20
Dim. (mm)	A	33	40	40	43	43
Size	Inch	1 1/4X1	1 1/2X1 1/2	1 1/2X3/4	1 1/2X1	1 1/2X1 1/4
	mm	32X25	40X15	40X20	40X25	40X32
Dim. (mm)	A	43	45	45	45	44

240

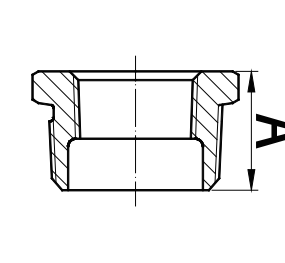
Reducing Socket



Size	Inch	2X3/4	2X1	2X1 1/4	2X1 1/2	2 1/2X1
	mm	50X20	50X25	50X32	50X40	65X25
Dim. (mm)	A	57	57	55.5	55.5	66
Size	Inch	2 1/2X1 1/2	2 1/2X2			
	mm	65X40	65X50			
Dim. (mm)	A	66	66			

241

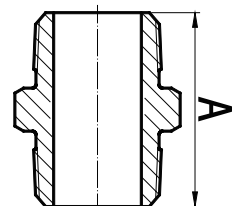
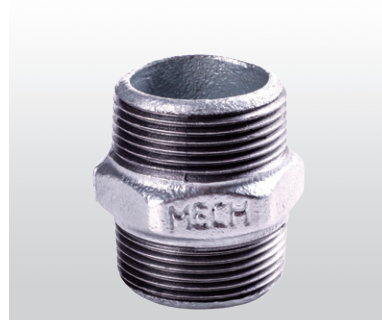
Bushing



Size	Inch	3/4X1/2	1X1/2	1X3/4	1 1/4X1	1 1/2X3/4	1 1/2X1
	mm	20X15	25X15	25X20	32X25	40X20	40X25
Dim. (mm)	A	26	29	29	31	31	31
Size	Inch	1 1/2X1 1/4	2X1	2X1 1/4	2X1 1/2	2 1/2X2	
	mm	40X32	50X25	50X32	50X40	65X50	
Dim. (mm)	A	31	35	35	35	40	

280

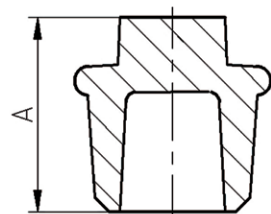
Hexagon Nipple



Size	Inch	1/2	3/4	1	1 1/4
	mm	15	20	25	32
Dim. (mm)	A	37.5	41.5	44	51
Size	Inch	1 1/2	2	2 1/2	
	mm	40	50	65	
Dim. (mm)	A	53	61	72	

290

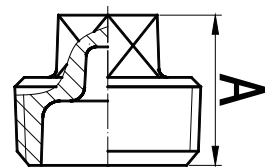
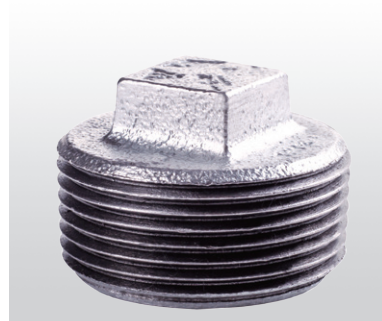
Plain Plug



Size	Inch	1/2			
	mm	15			
Dim. (mm)	A	27			
Size	Inch				
	mm				
Dim. (mm)	A				

291

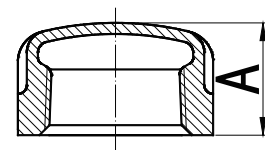
Plain Plug



Size	Inch	1/2	3/4	1	1 1/4
	mm	15	20	25	32
Dim. (mm)	A	25	28.5	32.5	35.1
Size	Inch	1 1/2	2	2 1/2	
	mm	40	50	65	
Dim. (mm)	A	37.6	40.1	46	

300

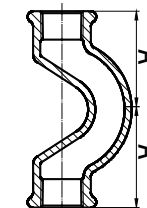
Cap



Size	Inch	1/2	1	2	
	mm	15	25	50	
Dim. (mm)	A Min	19	24	32	
Size	Inch				
	mm				
Dim. (mm)	A Min				

85

Crossover



Size	Inch	3/4	1		
	mm	20	25		
Dim. (mm)	A	54	70		
Size	Inch				
	mm				
Dim. (mm)	A				